



# MC33 Series

## Accessories Guide

Version 0.4 | Sep 7, 2019

# Cradle Options

## Single Slot Cradle



### Single Slot Cradle w/Spare Battery Charger:

#### CRD-MC33-2SUCHG-01

Single slot USB cradle, w/spare battery charger, charges one device and one spare battery. Allows USB communication to the device with an additional micro-USB cable.

**Requires:** Power supply **PWR-BGA12V50W0WW**, DC line cord **CBL-DC-388A1-01** and country specific 3 wire AC line cord.

## Main Features

- USB communication
- Fast-charge while using MC33 PP+ batteries
- Charges one device and one spare battery
- Compatible with MC32 and MC33 batteries
- Compatible with Level V and Level VI power supplies

## Additional Accessories for Single Slot Cradle



#### 25-124330-01R

Micro-USB to USB cable for single slot cradle



#### PWR-BGA12V50W0WW

Level VI AC/DC power supply (brick, replacement for PWR-S-14000-148R)

**AC Input:** 100-240V, 2.4A

**DC Output:** 12V, 4.16A, 50W

**Requires:** DC line cord and country specific grounded AC line cord.



#### CBL-DC-388A1-01

DC line cord for running the single slot cradles or battery chargers from a single Level VI power supply PWR-BGA12V50W0WW, Level VI replacement for PWR-S-14000-148R.



#### 23844-00-00R

US AC line cord, 7.5 feet long, grounded, three wire for power supplies.

# Cradle Options

## Multi-slot ShareCradles



### Multi-Slot Cradle Options:

#### **CRD-MC33-5SCHG-01**

5Slot charge only cradle, charges up to five devices.

#### **CRD-MC33-5SETH-01**

5Slot Ethernet cradle, charges up to five devices and provides Ethernet communication.

#### **CRD-MC33-4SC4BC-01**

4Slot charge only cradle with 4Slot spare battery charger, charges up to 4 devices and up to 4 spare batteries on the same cradle.

#### **CRD-MC33-4SE4BC-01**

4Slot Ethernet cradle with 4Slot spare battery charger, charges up to 4 devices and up to 4 spare batteries on the same cradle and provides Ethernet communication.

**All Cradles Require:** Power supply **PWR-BGA12V108W0WW**, DC cord **CBL-DC-381A1-01** and country specific 3 wire AC line cord.

## Main Features

- Charge only and Ethernet ShareCradle configurations
- Fast-charge while using MC33 PP+ batteries
- Charges five devices or four devices with four spare batteries
- Compatible with MC32 and MC33 batteries
- Compatible with Level V and Level VI power supplies
- Desk/Wall/Rack mount options

## Additional Accessories for Multi-Slot Cradles



#### **PWR-BGA12V108W0WW**

Level VI AC/DC power supply (brick, Replacement for PWRS-14000-241R)

**AC Input:** 100-240V, 2.8A

**DC Output:** 12V, 9A, 108W

**Requires:** DC line cord and country specific grounded AC line cord.



#### **CBL-DC-381A1-01**

DC line cord for running multi-slot cradles from a single Level VI power supply PWR-BGA12V108W0WW, Level VI replacement for PWRS-14000-241R



#### **23844-00-00R**

US AC line cord, 7.5 feet long, grounded, three wire for power supplies.



#### **BRKT-SCRD-SMRK-01**

Rack/Wall mounting bracket, allows to install any multi-slot cradle on a wall or a 19" IT rack.

# Chargers and Batteries

## Spare Batteries



### BTRY-MC33-27MA-01

PowerPrecision+ Lithium Ion battery, 2740 mAh, provides advanced State of Charge and State of Health, supports fast-charge while using MC33 cradles and chargers.

**Pack of 10:** BTRY-MC33-27MA-10



### BTRY-MC33-52MA-01

PowerPrecision+ Lithium Ion battery, 5200 mAh, provides advanced State of Charge and State of Health, supports fast-charge while using MC33 cradles and chargers.

**Pack of 10:** BTRY-MC33-52MA-10

## Spare Battery Charger Options:



### Main Features

- Fast-charge while using MC33 PP+ batteries
- Compatible with MC32 and MC33 batteries
- Compatible with Level V and Level VI power supplies
- Desk/Wall/Rack mount options

### SAC-MC33-4SCHG-01

4-slot battery charger, charges four spare batteries.

**Requires:** Power supply **PWR-BGA12V50W0WW**, DC line cord **CBL-DC-388A1-01** and country specific 3 wire AC line cord.

### SAC-MC33-20SCHG-01

20-slot battery charger, charges twenty spare batteries.

**Requires:** Power supply **PWR-BGA12V108W0WW**, DC cord **CBL-DC-381A1-01** and country specific 3 wire AC line cord.



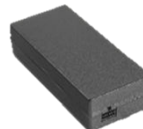
### PWR-BGA12V50W0WW

Level VI AC/DC power supply. **AC Input:** 100-240V, 2.4A, **DC Output:** 12V, 4.16A, 50W. **Requires:** DC line cord and country specific grounded AC line cord.



### CBL-DC-388A1-01

DC line cord for running the single slot cradles or battery chargers from a single Level VI power supply PWR-BGA12V50W0WW.



### PWR-BGA12V108W0WW

Level VI AC/DC Power Supply. **AC Input:** 100-240V, 2.8A, **DC Output:** 12V, 9A, 108W. **Requires:** DC line cord and country specific grounded AC line cord.



### CBL-DC-381A1-01

DC line cord for running multi-slot cradles from a single Level VI power supply PWR-BGA12V108W0WW.



### 23844-00-00R

US AC line cord, 7.5 feet long, grounded, three wire for power supplies.



### BRKT-SCRD-SMRK-01

Rack/Wall mounting bracket, allows to install the 20-slot battery charger or up to four 4-slot battery chargers on a wall or a 19" IT rack.

# Other Charge Accessories

## Backwards Compatibility



### ADP-MC33-CRDCUP-01

Charge only adapter for backwards compatibility with MC32 cradles, the adapter can be installed on any MC32 single slot or multi-slot cradle (charge only or Ethernet) allowing to charge a MC33 device (the adapter does not provide USB or Ethernet communication and does not provide fast-charge).



### BTRY-MC32-01-01

MC32 PowerPrecision Lithium Ion battery, 2740 mAh. All MC33 charge accessories and brick devices are compatible with MC32 batteries (MC32 batteries do not allow fast-charge on any MC33 charge accessories).

**Pack of 10:** BTRY-MC32-01-10



### BTRY-MC32-52MA-01

MC32 PowerPrecision Lithium Ion battery, 5200 mAh. All MC33 charge accessories and devices are compatible with MC32 batteries (MC32 batteries do not allow fast-charge on any MC33 charge accessories).

**Pack of 10:** BTRY-MC32-52MA-10

## USB Charge Cable



### CBL-MC33-USBCHG-01

USB cable, provides fast-charge when a MC33 PP+ battery and a wall adapter is used, it also allows USB communication to the device when connected to a PC. **Requires:** Power supply **PWR-WUA5V12W0US**

## Additional Accessories for USB Cable



### PWR-WUA5V12W0US

Level VI power supply (wall adapter)  
100-240 VAC, 5V, 2.5A with US plug.

Other countries:

- Australia: **PWR-WUA5V12W0AU**
- Brazil: **PWR-WUA5V12W0BR**
- China: **PWR-WUA5V12W0CN**
- Europe: **PWR-WUA5V12W0EU**
- India: **PWR-WUA5V12W0IN**
- Korea: **PWR-WUA5V12W0KR**
- UK: **PWR-WUA5V12W0GB**

# Softgoods for **GUN** Configurations

## Holsters



### **SG-MC3021212-01R**

Fabric holster, secures to a belt or a shoulder strap. Allows to carry the gun device on the hip or cross-body. Requires belt or shoulder strap ordered separately.

### **Shoulder strap 58-40000-007R**

Universal shoulder strap for fabric holster.



### **Belt for holster 11-08062-02R**

Universal belt for fabric holster.



### **SG-MC33-RDHLST-01**

Rigid holster, secures to a belt. Allows carrying the gun device on the hip.

## Protective boot



### **SG-MC33-RBTG-01**

Protective boot for gun configurations, protects the device from wear and tear.

## Other



### **SG-MC33-HDSTPG-01**

Spare hand strap for gun configurations, allows to attach and store a stylus with coiled tether (Qty. 1)  
Order Stylus Separately:  
SG-TC7X-STYLUS-03

# Softgoods for **BRICK** Configurations

## Carrying Solutions



### SG-MC3X-SHLSTB-01

MC32/MC33 Soft Holster. Compatible with Straight Shooter and Rotating Head devices, allows user to wear the device on a belt or Cross-Body, includes a shoulder Strap and Belt Clip.



### SG-MC33-RDHLST-01

Rigid holster, secures to a belt. Allows carrying the straight shooter or the rotating head device on the hip.

## Protective boots



### SG-MC33-RBTRT-01

Protective boot for rotating head configurations, protects the device from wear and tear (Turret Cup). Order device boot SG-MC33-RBTRD-01 separately.



### SG-MC33-RBTS-01

Protective boot for straight shooter configurations, protects the device from wear and tear.

### SG-MC33-RBTRD-01

Protective boot for rotating head configurations, protects the device from wear and tear (Device Boot). Order turret cup boot SG-MC33-RBTRT-01 separately.

## Other



### SG-MC33-HDSTPB-01

Spare hand strap for straight shooter or rotating head configurations, allows to attach and store a stylus with coiled tether (Qty. 1) Order Stylus Separately: SG-TC7X-STYLUS-03.



### SG-MC33-LNYDB-01

Retractable lanyard w/shoulder strap and belt clip for MC33 straight shooter or rotating head device, allows to use the device cross-body with the shoulder strap included or strap can be removed to use the retractor and device on a belt. When used as a belt clip, the retractor can be mounted on belt 11-08062-02R.

# Other Accessories

## Mounting accessories



### MNT-MC33-FLCHKT-01

Un-powered forklift mount. Allows installing the device on a roll bar or square surface of a forklift. Includes: Forklift holder (MNT-MC33-FLCH-01), RAM double socket arm for 1" ball (MNT-RAM-B201U) , RAM forklift clamp 2.5" square rail base (MNT-RAM-B247U25).



### BRKT-SCRD-SMRK-01

Rack/Wall mounting bracket, allows to install any Multi-slot ShareCradle, the 20-slot battery charger or up to four 4-slot battery chargers on a wall or a 19" IT rack.

## Other accessories



### MISC-MC33-SCRN-01

Tempered glass screen protector (Qty. 5)



### SG-TC7X-STYLUS-03

Stylus with coiled tether (Qty. 3). Made of conductive carbon-filled plastic material, optimized for enterprise durability.



### 25-124411-03R

Headset adapter cable to standard 3-pole 2.5mm barrel jack, for quick-disconnect wired headsets.



### HS2100-OTH

HS2100 Rugged wired headset with over-the-head headband. Requires headset adapter cable 25-124411-03R.

### HS2100-OTH

HS2100 Rugged wired headset with over-the-head headband. Requires headset adapter cable 25-124411-03R.



### HS3100-OTH

HS3100 Rugged Bluetooth headset with over-the-head headband. Includes boom and headband module.

### HS3100-BTN-L

HS3100 Rugged Bluetooth headset with behind-the-neck headband (left). Includes boom and headband module.



# Other Accessories

## Country specific AC grounded line cords

Part Number	Description
23844-00-00R	AC line cord, 7.5 feet long, grounded, three wire. Associated Country: US
50-16000-217R	AC Line Cord, 1.9M, grounded, three wire, AS 3112 plug. Associated Country: Australia, New Guinea
50-16000-218R	AC Line Cord, 1.8M, grounded, three wire, NEMA 1-15P plug. Associated Country: Japan
50-16000-219R	AC Line Cord, 1.8M, three wire, grounded BS1363 plug. Associated Countries: Hong Kong, Iraq, Malaysia, Singapore, United Kingdom
50-16000-220R	AC Line Cord, 1.8M, grounded, three wire CEE 7/7 plug. Associated Countries: Europe, Abu Dhabi, Bolivia, Dubai, Egypt, Iran, Korea, Russia, Vietnam
50-16000-256R	AC Line Cord, 1.8M, grounded, three wire, CEE7/7 plug. Associated Country: Korea
50-16000-257R	AC Line Cord, 1.8M, grounded, three wire, IEC 60320 C13 plug. Associated Country: China
50-16000-669R	AC Lind Cord, 1.9 M grounded, three wire, BS 546 Plug. Associated Country: India
50-16000-671R	AC Line Cord, 1.8M grounded, CIE 23-16 plug. Associated Country: Italy
50-16000-672R	AC Line Cord, 1.9M grounded, three wire, S132 Plug. Associated Country: Israel
50-16000-727R	AC Line Cord, 1.9M grounded, three wire. Associated Country: Brazil

## Country specific wall adapters

Part Number	Description
PWR-WUA5V12W0AU	Level VI power supply (wall adapter) 100-240 VAC, 5V, 2.5A with Australia plug
PWR-WUA5V12W0BR	Level VI power supply (wall adapter) 100-240 VAC, 5V, 2.5 A with Brazil plug
PWR-WUA5V12W0CN	Level VI power supply (wall adapter) 100-240 VAC, 5V, 2.5A with China plug
PWR-WUA5V12W0EU	Level VI power supply (wall adapter) 100-240 VAC, 5V, 2.5A with Europe plug
PWR-WUA5V12W0GB	Level VI power supply (wall adapter) 100-240 VAC, 5V, 2.5A with UK plug
PWR-WUA5V12W0IN	Level VI power supply (wall adapter) 100-240 VAC, 5V, 2.5A with India plug
PWR-WUA5V12W0KR	Level VI power supply (wall adapter) 100-240 VAC, 5V, 2.5A with Korea plug
PWR-WUA5V12W0US	Level VI power supply (wall adapter) 100-240 VAC, 5V, 2.5A with US plug