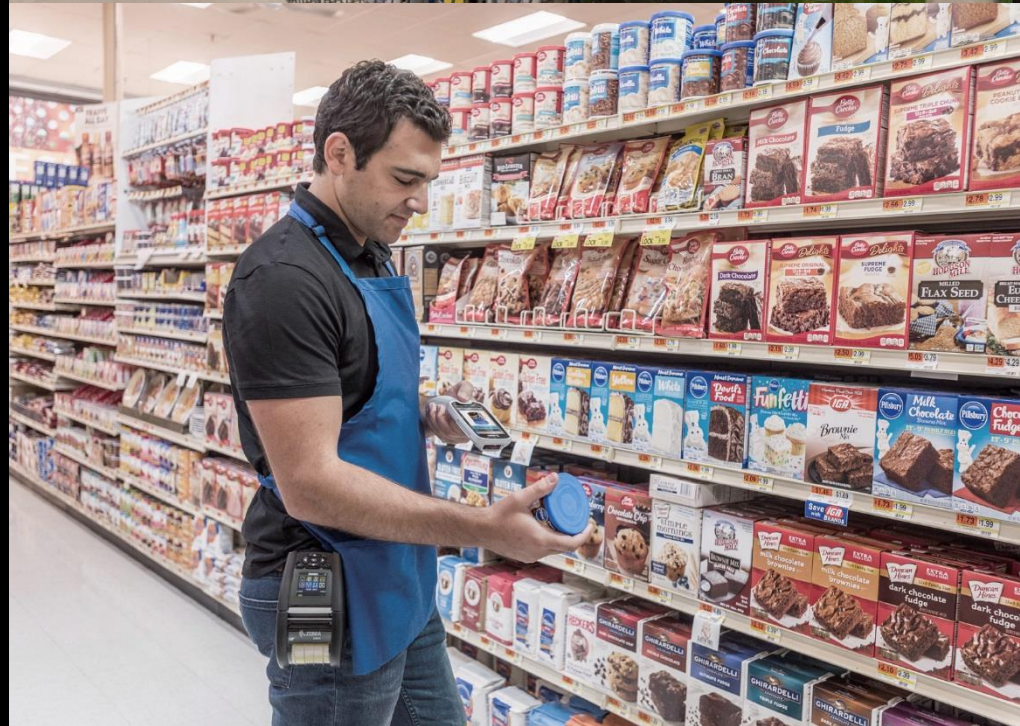




PS20

Personal Shopper

Accessories Guide



PS20 Configurations

Model	Part Number	Description	Comments
PS20-Base	PS20J-B2G1NA00	PS20 Base Model, 4" Display, SE2100, 4GB RAM/16GB Flash, Android GMS, No-Camera, No-Sensors, 1YR Warranty, US/PR/Canada	Single Pack PS20 Base
PS20-Base	PS20J-B2G1A600	PS20 Base Model, 4" Display, SE2100, 4GB RAM/16GB Flash, Android GMS, No-Camera, No-Sensors, 1YR Warranty, ROW	Single Pack PS20 Base
PS20-Base	PS20J-B2G2CN00	PS20 Base Model, 4" Display, SE2100, 4GB RAM/16GB Flash, Android Non-GMS, No-Camera, No-Sensors, 1YR Warranty, China	Single Pack PS20 Base
PS20-Base	KT-PS20J-B2G1NA00	PS20 Base Model, 4" Display, SE2100, 4GB RAM/16GB Flash, Android GMS, No-Camera, No-Sensors, 1YR Warranty, US/PR/Canada, Pack of 10 Units	10 Pack PS20 Base
PS20-Base	KT-PS20J-B2G1A600	PS20 Base Model, 4" Display, SE2100, 4GB RAM/16GB Flash, Android GMS, No-Camera, No-Sensors, 1YR Warranty, ROW, Pack of 10 Units	10 Pack PS20 Base
PS20-Base	KT-PS20J-B2G2CN00	PS20 Base Model, 4" Display, SE2100, 4GB RAM/16GB Flash, Android Non-GMS, No-Camera, No-Sensors, 1YR Warranty, China, Pack of 10 Units	10 Pack PS20 Base
PS20-Plus	PS20J-P4G1NA00	PS20 Plus Model, 4" Display, SE4710+Digimarc, 4GB RAM/16GB Flash, Android GMS, Camera, Sensors, 1YR Warranty, US/PR/Canada	Single Pack PS20 Plus
PS20-Plus	PS20J-P4G1A600	PS20 Plus Model, 4" Display, SE4710+Digimarc, 4GB RAM/16GB Flash, Android GMS, Camera, Sensors, 1YR Warranty, ROW	Single Pack PS20 Plus
PS20-Plus	PS20J-P4G2CN00	PS20 Plus Model, 4" Display, SE4710+Digimarc, 4GB RAM/16GB Flash, Android Non-GMS, Camera, Sensors, 1YR Warranty, China	Single Pack PS20 Plus
PS20-Plus	KT-PS20J-P4G1NA00	PS20 Plus Model, 4" Display, SE4710+Digimarc, 4GB RAM/16GB Flash, Android GMS, Camera, Sensors, 1YR Warranty, US/PR/Canada, Pack of 10 Units	10 Pack PS20 Plus
PS20-Plus	KT-PS20J-P4G1A600	PS20 Plus Model, 4" Display, SE4710+Digimarc, 4GB RAM/16GB Flash, Android GMS, Camera, Sensors, 1YR Warranty, ROW, Pack of 10 Units	10 Pack PS20 Plus
PS20-Plus	KT-PS20J-P4G2CN00	PS20 Plus Model, 4" Display, SE4710+Digimarc, 4GB RAM/16GB Flash, Android Non-GMS, Camera, Sensors, 1YR Warranty, China, Pack of 10 Units	10 Pack PS20 Plus

Spare batteries



BTRY-PS20-35MA-01

PowerPrecision+ Lithium Ion battery, 3500 mAh, provides advanced State of Charge and State of Health, compatible with all PS20 configurations and cradles.

Pack of 10 units: BTRY-PS20-35MA-10

Spare batteries:

PowerPrecision + Batteries provide an advanced new battery technology integrated into our newest devices bringing a higher level of intelligence to deliver maximum performance.

This battery is compatible with all PS20 configurations while using any MC18 single and 3-slot cradles:

- Compatible with PS20 only
- Compatible with Level V and Level VI power supplies
- Compatible with single and 3-slot cradles
- Supports standard and fast charging modes
- Not compatible with MC18 terminals

Main features:

Information stored on each PowerPrecision+ battery:

- Continuously updated capacity as battery ages
- Charge accepted per type of charger
- Time to fully charge and time to fully discharge
- Elapsed time since first use
- Dynamically models the battery life based on historical usage

Supported features:

- **Advanced state of health:** actively measures and calculates the battery capacity under standard load conditions and temperature
- **Advanced state of charge:** time to empty under present usage and time to full under present charge condition

Cradle options

Single slot cradle



Single Slot Locking Cradle:

CRD-MC18-1SLOT-01

Single Slot Locking Cradle, keeps the device with display facing out. Compatible with MC18 and all configurations of PS20.

Requires: Power Supply **PWR-BGA12V108W0WW**, DC line cord and Country Specific AC line cord sold separately.

Additional accessories for single slot cradle



PWR-BGA12V108W0WW

Level VI AC/DC power supply. **AC Input:** 100-240V, 2.8A. **DC Output:** 12V, 9A, 108W **Requires:** DC line cord and country specific grounded AC line cord.



CBL-DC-394A1-01

DC Line Cord 19.5inch (0.5M) for powering one cradle from a single power supply. Supports interconnected cradles to charge maximum 6 devices depending on charging mode required.



CBL-DC-393A1-02

DC "Y" Line Cord 39.7inch (1M) for powering two cradles from a single power supply. Supports interconnected cradles to charge maximum 12 devices (up to 6 devices powered off each leg of the cable) depending on charging mode required.



CBL-DC-392A1-02

DC "Y" Line Cord 79.4inch (2M) for powering two cradles from a single power supply. Supports interconnected cradles to charge maximum 12 devices (up to 6 devices powered off each leg of the cable) depending on charging mode required.



25-66430-01R

Cradle Interconnection Cable 60 Inch (1.5M) Connects Cradles to each other to run off one power supply.



25-66431-01R

Cradle Interconnection Cable 12.6 Inch (32cm) Connects Cradles to each other to run off one power supply

Single Slot Cradle Charge Methods

Step 1: Power Supply

Level VI power supply **PWR-BGA12V108W0WW** and country specific 3-wire AC Line Cord.



Step 2: Charge Mode

Choose required charging mode.

Fast – 1.5 AMPS:
MAX: 9 Single Slot Cradles/Devices

Standard - 1.0 AMP:
MAX: 12 Single Slot Cradles/Devices

Step 3: DC Line Cord

Select one **DC Cable** to connect a power supply to multiple single slot cradles depending on charge mode:

CBL-DC-394A1-01	DC Line Cord 19.5inch (0.5M). Supports up to 6 single slot cradles.
CBL-DC-393A1-02	DC "Y" Line Cord 39.7inch (1M). Supports up to 12 single slot cradles (max 6 cradles powered off each leg of the cable)
CBL-DC-392A1-02	DC "Y" Line Cord 79.4inch (2M). Supports up to 12 single slot cradles (max 6 cradles powered off each leg of the cable)

Step 4: Interconnect cables

Choose the number of cradle interconnect cables required based on charge mode and following the table below.

Fast Charge Mode

9 Single Slot Cradles Maximum per power supply. No more than 6 single slot cradles can be powered off each leg if a "Y" power cable is used.



Cradle Interconnect Cable
25-66431-01R (12.6inch, 32cm)

Number of Cradles	2	3	4	5	6
# of Interconnect Cables required	1	2	3	4	5
Number of Cradles	7	8	9		
# of Interconnect Cables required	5	6	7		

Standard Charge Mode



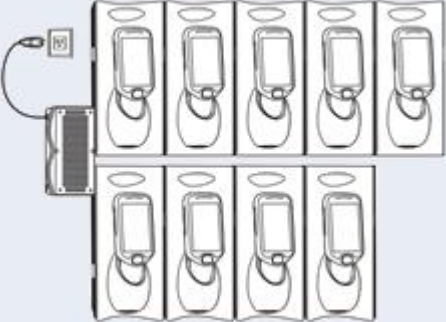
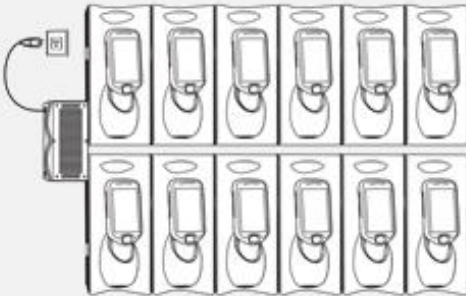
12 Single Slot Cradles Maximum per power supply. No more than 6 single slot cradles can be powered off each leg if a "Y" power cable is used.



Cradle Interconnect Cables:
25-66431-01R (12.6inch, 32cm)

Number of Cradles	2	3	4	5	6	
# of Interconnect Cables required	1	2	3	4	5	
Number of Cradles	7	8	9	10	11	12
# of Interconnect Cables required	5	6	7	8	9	10

Single Slot Cradle Charge Methods

		Fast Charge Mode @1.5AMP (no more than 9 devices in total per power supply)		Standard Charge Mode @1AMP (no more than 12 devices in total per power supply)	
		Total Cradles Supported	Total Devices Supported	Total Cradles Supported	Total Devices Supported
Single Slot Cradle CRD-MC18-1SLOT-01	With DC Cable: CBL-DC-394A1-01	Up to 6 single slot cradles in total daisy chained using interconnection cable: 25-66431-01R	Up to 6 devices in total 	Up to 6 cradles in total daisy chained using interconnection cable: 25-66431-01R	Up to 6 devices in total 
	With DC "Y" Cable: CBL-DC-393A1-02	Up to 6 single slot cradles on each "leg" of the "Y" cable daisy chained using interconnection cable: 25-66431-01R	Up to 9 devices in total 	Up to 6 single slot cradles on each "leg" of the "Y" cable daisy chained using interconnection cable: 25-66431-01R	Up to 12 devices in total 
	With DC "Y" Cable: CBL-DC-392A1-02	Note: No more than 9 cradles in total		Note: No more than 12 cradles in total	

Cradle options

3-slot cradles



3-Slot Cradles:

CRD-MC18-3SLOTH-01

3-Slot Non-Locking High Density Cradle, display facing out. Compatible with MC18 and PS20.

CRD-MC18-3SLCKH-01

3-Slot Locking High Density Cradle, display facing out. Compatible with MC18 and PS20.

CRD-MC18-3SLCKS-01

3-Slot Locking Super High Density Cradle, display facing up. Compatible with MC18 and PS20.

All cradles require: Power Supply **PWR-BGA12V108W0WW**, DC line cord and Country Specific AC line cord sold separately.

Additional accessories for single slot cradle



PWR-BGA12V108W0WW

Level VI AC/DC power supply. **AC Input:** 100-240V, 2.8A. **DC Output:** 12V, 9A, 108W. **Requires:** DC line cord and country specific grounded AC line cord.



CBL-DC-394A1-01

DC Line Cord 19.5inch (0.5M) for powering one cradle from a single power supply. Supports interconnected cradles to charge maximum 6 devices depending on charging mode required.



CBL-DC-393A1-02

DC "Y" Line Cord 39.7inch (1M) for powering two cradles from a single power supply. Supports interconnected cradles to charge maximum 12 devices (up to 6 devices powered off each leg of the cable) depending on charging mode required.



CBL-DC-392A1-02

DC "Y" Line Cord 79.4inch (2M) for powering two cradles from a single power supply. Supports interconnected cradles to charge maximum 12 devices (up to 6 devices powered off each leg of the cable) depending on charging mode required.



25-66430-01R

Cradle Interconnection Cable 60 Inch (1.5M) Connects Cradles to each other to run off one power supply.



25-66431-01R

Cradle Interconnection Cable 12.6 Inch (32cm) Connects Cradles to each other to run off one power supply



CBL-MC18-EXINT1-01

Cradle Interconnection Extension Cable 12.6 Inch (32cm). Connects two Interconnection cables 25-66431-01R together to provide additional length.

3-Slot Cradle Charge Methods

Step 1: Power Supply

Level VI power supply **PWR-BGA12V108W0WW** and country specific 3-wire AC Line Cord.



Step 2: Charge Mode

Choose required charging mode.

Fast – 1.5 AMPS:
MAX: 3 x 3-Slot Cradles,
total of 9 Devices

Standard - 1.0 AMP:
MAX: 4 x 3-Slot Cradles,
total of 12 Devices

Step 3: DC Line Cord

Select one **DC Cable** to connect a power supply to multiple 3-slot cradles depending on charge mode:

CBL-DC-394A1-01	DC Line Cord 19.5inch (0.5M). Supports up to two 3-slot cradles.
CBL-DC-393A1-02	DC "Y" Line Cord 39.7inch (1M). Supports up to four 3-slot cradles (max 2 cradles powered off each leg of the cable)
CBL-DC-392A1-02	DC "Y" Line Cord 79.4inch (2M). Supports up to four 3-slot cradles (max 2 cradles powered off each leg of the cable)

Step 4: Interconnect cables

Choose the number of cradle interconnect cables required based on charge mode and following the table below.

Fast Charge Mode

3 Three-Slot Cradles Maximum per power supply. No more than 2 cradles can be powered off each leg if a "Y" power cable is used.



Cradle Interconnect Cables
25-66431-01R (12.6inch, 32cm)



Interconnection Extension Cable (12.5inch, 32cm):
CBL-MC18-EXINT1-01

Number of Cradles	2	3
# of Interconnect Cables required	1	1
# of Extension Cables required	2	3

Standard Charge Mode

4 Three-Slot Cradles Maximum per power supply. No more than 2 cradles can be powered off each leg if a "Y" power cable is used.



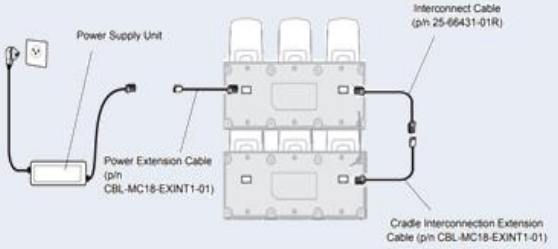
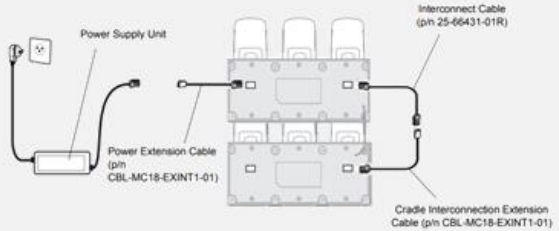
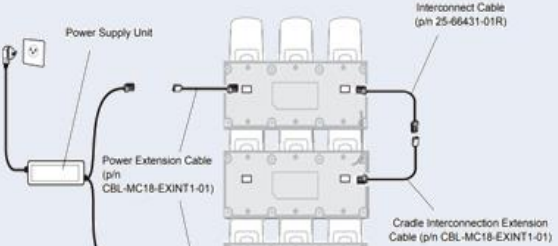
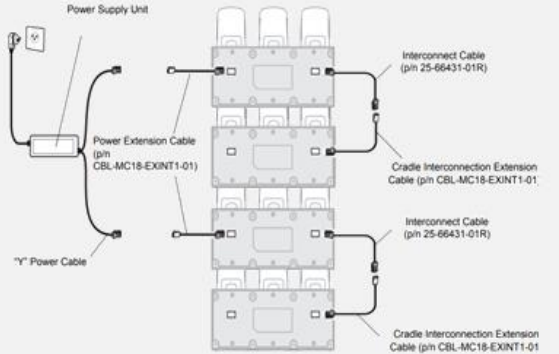
Cradle Interconnect Cables
25-66431-01R (12.6inch, 32cm)



Interconnection Extension Cable (12.5inch, 32cm):
CBL-MC18-EXINT1-01

Number of Cradles	2	3	4
# of Interconnect Cables required	1	1	2
# of Extension Cables required	2	3	4

3-Slot Cradle Charge Methods

		Fast Charge Mode @1.5AMP (no more than 9 devices in total per power supply)		Standard Charge Mode @1AMP (no more than 12 devices in total per power supply)	
		Total Cradles Supported	Total Devices Supported	Total Cradles Supported	Total Devices Supported
3-Slot Cradles	With DC Cable: CBL-DC-394A1-01	Up to two 3-slot cradles in total daisy chained using interconnection cable: 25-66431-01R and extension cable CBL-MC18-EXINT1-01	Up to 6 devices in total 	Up to two 3-slot cradles in total daisy chained using interconnection cable: 25-66431-01R and extension cable CBL-MC18-EXINT1-01	Up to 6 devices in total 
	CRD-MC18-3SLOTH-01	With DC "Y" Cable: CBL-DC-393A1-02	Up to 9 devices in total 	Up to two 3-slot cradles on each "leg" of the "Y" cable daisy chained using interconnection cable: 25-66431-01R and extension cable CBL-MC18-EXINT1-01	Up to 12 devices in total 
	CRD-MC18-3SLCKH-01				
CRD-MC18-3SLCKS-01	With DC "Y" Cable: CBL-DC-392A1-02	Up to two 3-slot cradles on each "leg" of the "Y" cable daisy chained using interconnection cable: 25-66431-01R and extension cable CBL-MC18-EXINT1-01. Note: No more than three 3-slot cradles in total.	Up to two 3-slot cradles on each "leg" of the "Y" cable daisy chained using interconnection cable: 25-66431-01R and extension cable CBL-MC18-EXINT1-01. Note: No more than four 3-slot cradles in total.		

Other cradle accessories

Cradle Release Key



KT-MC18-CKEY-20

Used to mechanically unlock the PS20 from the 3-Slot & Single-Slot Cradles. Pack of 20 units.

Cradle Cover Removal Tool



KT-MC18-CTOOL-01

This tool aids in the removal of the top housing of the 3-Slot Cradles. Pack of 1 unit.

Terminal Reboot Tool



KT-MC18-REBOOT-05

This tool can be used to reboot the PS20 by holding the pins on the tool to the terminal while holding down the scan key for 10 seconds. Pack of 5 units.

Deployment Starter Kit



QTY-20



QTY-1



QTY-5

KT-MC18-CSTKIT-01

PS20 Deployment Starter Kit. Includes 20-pack of Release Keys (KT-MC18-CKEY-20), 5-pack of Terminal Reboot Tool (KT-MC18-REBOOT-05), and 1 Cradle Housing Tool (KT-MC18-CTOOL-01).

Other PS20 accessories

USB Programing Cable



CBL-PS20-USBCHG-01

PS20 USB cable, also allows USB communication to the device when connected to a PC.

Cart Mount



PSS-3SH01-00R

Cart mount, allows mounting the PS20 mobile computer on a shopping cart, it also allows to use the device on hands-free scanning mode.

Soft Holster



SG-PS20-SFTHLT-01

PS20 Soft Holster, allows to wear the device on the hip (includes belt clip) or crossbody with an additional shoulder strap (part number 58-40000-007R).

Screen Protector



MISC-PS20-SCRN-05

PS20 Tempered glass screen protector (Qty. 5)

Other accessories

Country specific 3-wire AC line cords

Part Number	Description
23844-00-00R	AC line cord, 7.5 feet long, grounded, three wire. Associated Country: US
50-16000-217R	AC Line Cord, 1.9M, grounded, three wire, AS 3112 plug. Associated Country: Australia, New Guinea
50-16000-218R	AC Line Cord, 1.8M, grounded, three wire, NEMA 1-15P plug. Associated Country: Japan
50-16000-219R	AC Line Cord, 1.8M, three wire, grounded BS1363 plug. Associated Countries: Hong Kong, Iraq, Malaysia, Singapore, United Kingdom
50-16000-220R	AC Line Cord, 1.8M, grounded, three wire CEE 7/7plug. Associated Countries: Europe, Abu Dhabi, Bolivia, Dubai, Egypt, Iran, Korea, Russia, Vietnam
50-16000-256R	AC Line Cord, 1.8M, grounded, three wire, CEE7/7 plug. Associated Country: Korea
50-16000-257R	AC Line Cord, 1.8M, grounded, three wire, IEC 60320 C13 plug. Associated Country: China
50-16000-669R	AC Lind Cord, 1.9 M grounded, three wire, BS 546 Plug. Associated Country: India
50-16000-671R	AC Line Cord, 1.8M grounded, CIE 23-16 plug. Associated Country: Italy
50-16000-672R	AC Line Cord, 1.9M grounded, three wire, S132 Plug. Associated Country: Israel
50-16000-727R	AC Line Cord, 1.9M grounded, three wire. Associated Country: Brazil