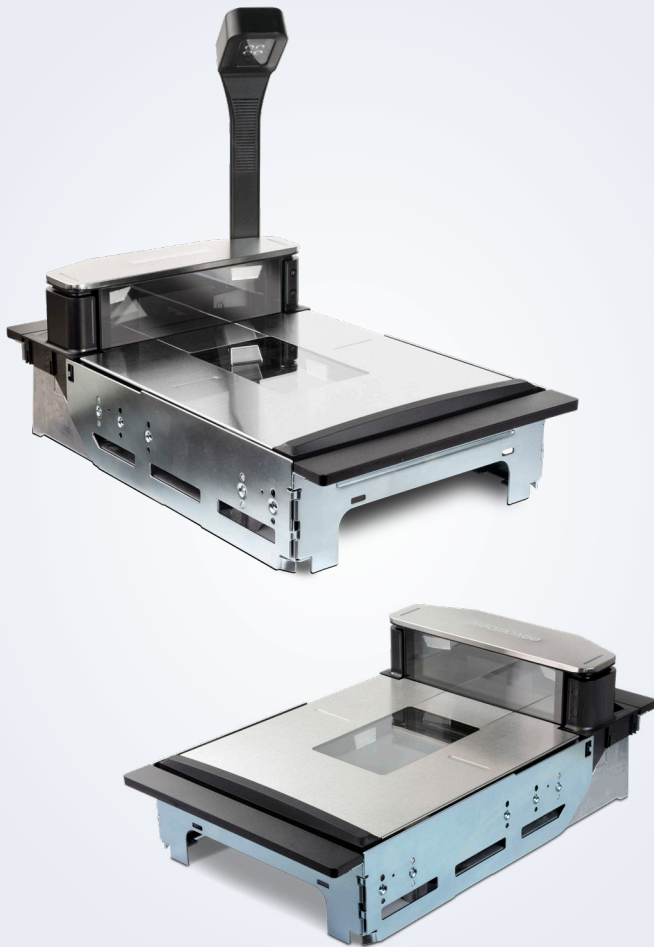


MAGELLAN™ 9900i



Scanning Excellence with an AI Edge



THE NEXT GENERATION IS HERE

The #1 selling “in counter” scanners for assisted and self check-out are now even better. Fresh styling, rugged design, industry-leading scan performance and new options that enable Artificial Intelligence (AI) at the check-out put the Magellan 9900i portfolio in a class of their own.

In 2013, Datalogic established a unique scanner style with our 2.7 in / 6.8 cm tower (bonnet), and the 9900i continues to support that popular form factor. The lower height allows customers to better meet ADA compliance and improve the customer experience. Three chassis lengths, multiple check stand mount options and the addition of a Top Down Reader (TDR) allows customers to tailor a solution that best solves their assisted and self check-out needs.

With basic and advanced configurations, the 9900i scanners and scanner/scales are the perfect companion for Point of Sale (POS) systems in all high throughput checkout environments.

ENHANCING THE CASHIER OR CUSTOMER EXPERIENCE

Packed with the latest imaging technology, the 9900i scanners feature the largest scan volume in their class. This ensures fastest read rates and ease of use regardless of 1D, 2D, GS1 or Digimarc symbologies.

The new Magellan scanners feature capacitive touch buttons and smooth surfaces to ensure the above counter areas are easy to clean and sanitize.

The coming 9900i TDR option expands the scan volume by 20% and adds an industry unique sixth sided view of items crossing the platter for the ultimate scanning experience. The TDR comes in 3 heights and offers an optional integrated customer-facing reader, enabling customers to scan mobile devices and coupons independent from a cashier in assisted lanes improving efficiency.

The Magellan 9900i scanners feature capacitive touch buttons and smooth surfaces to ensure the above counter areas are easy to clean and sanitize.

FEATURES FOR TODAY AND THE FUTURE

Magellan 9900i is powered by QuadVision™, a multi-core processor and multi-camera system with embedded Linux operating system to future-proof the platform. ScanSentry™ color camera options and neural processors coming in 2023 will result in a check-out that is fully enabled to support Artificial Intelligence (AI) software that will boost customer satisfaction and improve loss prevention.

FEATURES

- 2.7" / 6.8 cm tower height allows layout flexibility at the checkstand or SCO.
- Magellan 9900i features QuadVision™, a powerful IMX8 multi-core processor utilizing 4 cameras (2 horizontal and 2 vertical) that brings world class compute performance to the scanner. The 9900i delivers multiple high resolution images for each scan. Combine the powerful processors, 5 sided image capture and Datalogic's legendary software and you have previously unheard of performance to decode the most difficult and/or damaged barcodes. In addition, future optional integrated color cameras and color TDRs can be used for machine learning image capture and simultaneous video streaming via USB 3.0 for loss prevention.
- Optional built-in neural processors and accelerators enable trillions of operations per second inside the scanner eliminating a need for extra servers or cloud connections at the checkout.
- Note that the performance has already been optimized for the future GS1 Digital Link symbology which links valuable manufacturing and health safety details to each transaction. However GS1 final decode is subject to update during pilot testing.

INTEGRATED LOSS PREVENTION

ScaleSentry Technology

- Monitors the 2 primary sides of the scale platter with an infrared (invisible) beam to detect if fruit or produce is misplaced on the scale platter causing the item to be under-weighted.
- Misplaced fruits or produce will break the infrared beam and trigger an alert to the cashier, preventing the weight from being transmitted to the POS until the cashier corrects the problem.

All-Weights™ Scale Platter

- The All-Weights scale platter design provides an alternative weighing surface on top of the bonnet, allowing the user to lay produce that is too long to fit on the platter.



MAGELLAN 9900i (Scanner only: 9910, 9911, 9912; Scanner/Scale: 9921, 9922)

TECHNICAL SPECIFICATIONS

DECODING CAPABILITY

| | |
|---|---|
| Auto Discriminates all Retail Barcodes | EAN/JAN/UPC, Code 128, EAN/JAN Composites; GS1 DataBar Composites; GS1 DataBar Expanded Stacked; GS1 DataBar Stacked; GS1 DataBar Stacked Omnidirectional; MicroPDF417; PDF417; UPC A/E Composites. Aztec Code; Data Matrix; QR Code, Micro QR, Digimarc® Barcode and all future GS1 codes. |
| Illumination | Multiple diffused LEDs: orientation and wavelength optimized for eye comfort. |
| Scan Indicators | Visual: Good Read confirmation for all reading planes Audio: 85 dB Speaker - Adjustable Tone and Volume plus Supports WAV file formats. |

COMMUNICATIONS INTERFACES

| | |
|------------------------------|--|
| Host Multi-Interface | RS-232 / IBM 46XX / USB Multi-Interface: OEM (IBM) USB Plus Power (Scanner / Scale); RS-232 (Scanner) / RS-232 (Scale); RS-232 (Scanner) or Single Cable RS-232 (Scanner / Scale) |
| POS Operating Systems | Windows 10, Linux, 4690, Android™; OPOS and JavaPOS Utilities are available for download |
| Auxiliary Ports | Powered USB Host (Type A) (x2); Powered RS-232; Remote Scale Display; EAS Controller Ports; Sensormatic, Interlock |
| Ethernet Ports | 1 x Ethernet is standard; Optional 3 or 7 port Ethernet switch (IEEE1588) NOTE: Switch requires an external 48V power supply |

OPTIONAL SCALE FEATURES

| | |
|--|---|
| Magellan Dual Interval Scale Technology | Minimum Increment: Range 1: 0.002 kg / 0.005 lb; Range 2: 0.005 kg / 0.010 lb Scale Capacity: Range 1: 0 - 6.0 kg / 0 - 15.0 lb; Range 2: 6.0 - 15.0 kg / 15.0 - 30.0 lb |
| Magellan Single Interval Scale Technology | Minimum Increment: 0.005 kg / 0.010 lb; Scale Capacity: 0 - 15.0 kg / 0 - 30.0 lb |
| Adaptive Scale | Compatibility – Adaptive Scales: Avery; Bizerba; DIGI; Herbert; Mettler Toledo; Shekel Max. Static Weight: 68.0 kg / 150.0 lb Vibration immunity: 4 filter settings |

LOSS PREVENTION

| | |
|---------------------------------|--|
| All-Weighs Scale Platter | Integrated horizontal and vertical scale platter surfaces increase active weighing area for easy, accurate weighing of large items. |
| ScaleSentry | ScaleSentry is an infrared platter detection system to provide shrink prevention; Configurable audio / visual indicators identify items placed outside weighing surface |
| EAS Features | Integrated EAS Antenna for Checkpoint and Nedap. Sensormatic Deactivation Controller integrated with Datalogic SmartSentry™ technology; Scanner provides Good Read / EAS Status Indicators |

PHYSICAL CHARACTERISTICS

| | |
|-------------------|---|
| Dimensions | Depth (Below Counter): 10.6 cm / 4.0 in Length: Short - 35.2 cm / 13.9 in Length: Medium - 39.9 cm / 15.7 in Length: Long - 43.7 cm / 17.2 in Width: 29.2 cm / 11.5 in 9900i Height (Above Counter): 6.8 cm / 2.7 in |
|-------------------|---|

ELECTRICAL

| | |
|---------------------------|---|
| Power Requirements | Scanner Power Consumption: 12 VDC Operating (Nominal): 9.3 Watts; Sleep: 7.3 Watts; Optional DC brick: AC Input: 100 - 240 VAC, 50-60 Hz Optional Ethernet 48 VDC brick: AC Input: 100 - 240 VAC, 50-60 Hz |
|---------------------------|---|

ENVIRONMENTAL

| | |
|----------------------------------|--|
| Ambient Light | 0-86,080 lux |
| ESD Protection | 25 kV air discharge |
| Humidity (Non-Condensing) | 5 - 95% |
| Temperature | Operating: 10 to 40 °C / 50 to 104 °F Storage/Transport: -40 to 70 °C / -40 to 158 °F |

SAFETY & REGULATORY

| | |
|---------------------------------|---|
| Agency Approvals | The product meets necessary safety and regulatory approvals for its intended use. See Quick Reference Guide for a complete list of certifications. |
| Environmental Compliance | Complies to China RoHS; Complies to EU RoHS; Complies to R.E.A.C.H. - EC1907/2006 |

UTILITIES

| | |
|---------------------------------------|--|
| Aladdin™ Configurator | Datalogic Aladdin provides customers the opportunity to manage the configuration of handheld or fixed position products, and allows firmware updates, advanced formatting through an intuitive user interface. |
| Magellan SDK(s) | Datalogic will provide developer tools to support POS integration and the optional AI enablement HW functionality (Color cameras, Neural Processors, and Ethernet expansion). |
| Remote Management Capabilities | Current Diagnostic Reporting utilizes WMI (OPOS and JavaPOS) and MBeans (JavaPOS); Host Download Supports IBM Director, Wavelink Avalanche™ and other ERP management solutions. |

FUTURE AI ENABLEMENT FEATURES (OPTIONAL)

| | |
|--------------------------|--|
| Image Capture | Magellan 9900i offer two integrated color cameras for AI inference models such as produce / item recognition (integrated horizontal plus the TDR). |
| Neural Processors | Magellan 9900i color cameras have integrated neural processors. |
| Tensor Processor | Magellan 9900i offer a Coral TPU for AI inference model acceleration inside the scanner. |

WARRANTY

| | |
|-----------------|--|
| Warranty | 1-Year Standard Factory Warranty (5 day turn around) |
|-----------------|--|

ACCESSORIES



90ACC0419 Top Down Reader (TDR) 31.5 cm / 12.4 in
90ACC0418 Top Down Reader (TDR) 22.8 cm / 9.0 in
90ACC0417 Top Down Reader (TDR) 17.8 cm / 7.0 in
Top Down Reader with Customer Facing Reader also available



90ACC0340 Single Display/
Single Interval



90ACC0343 Dual Display/
Single Interval



Smart Color Cameras
(coming soon)