

# MEMOR™ 11 FAMILY OF MOBILE COMPUTERS

Optimized performance and flexibility in a market-proven design



**memor11**  
F A M I L Y



## FLEXIBILITY TAILORED FOR YOUR WORKFORCE

The Memor 11 family is designed to provide a versatile solution for today's mobile workforce. With an up-to-date operating system and enhanced processing capabilities, this family of devices deliver superior scanning performance and all-around efficiency. Whether you require flexibility in Retail, Warehouse, Manufacturing, or Transportation & Logistic applications, the Memor 11 family is built to meet your needs. Choose between Wi-Fi only or Wi-Fi/Cellular models to always be connected within your premises or wherever you go.

## RUGGED AND COMPACT DESIGN IN AN ENTERPRISE-GRADE FORM FACTOR

The market-proven, semi-rugged, and compact design of the Memor 11 follows the highly successful Memor 10 and can withstand more tumble hits than most comparable devices in the market.

## ADVANCED BATTERY MANAGEMENT AND WIRELESS CHARGING

Agile performance due to its long-lasting swappable battery and embedded SafeSwap™ Technology which ensures uninterrupted continuity. Its effective wireless charging system provides ultra-reliable contactless charging that helps reduce maintenance and promotes efficient charging.

## IMPROVED SCANNING PERFORMANCE

Heighten scanning performance in dark warehouse environments with the high-end 2D scan engine, plus increased accuracy and efficiency when paired with Datalogic's exclusive 'Green Spot' Technology in scan-intensive settings.

## ENTERPRISE-READY SOLUTION; A SECURE INVESTMENT

Certified as an Android™ Enterprise Recommended device with fortified security and privacy settings of Android 11, plus the benefits of Google Mobile Services.

## FEATURES

- Dedicated Wi-Fi Only and Wi-Fi/Cellular models
- Market-proven design, compact and robust
- Superior processing capabilities + 4GB of RAM
- 5-inch capacitive multi-touch HD display
- Android 11 with Google Mobile Services (upgradeable to Android 14)
- Ultra-slim 2D imager enhanced for dark environment performance + Datalogic's exclusive 'Green Spot' technology for visual good-read feedback
- Ultra-reliable swappable battery with SafeSwap™ capability and Smart Battery Management
- Contactless wireless charging helps reduce maintenance costs and promotes proper charging of the device
- Chemical resistant enclosure designed to withstand daily cleaning with harsh disinfectant solutions
- Backward compatible with all existing Memor 10 accessories
- Access to full suite of value-added Datalogic Software Applications Tools
- EASEOFCARE Service Plans and Datalogic Shield to extend lifecycle and extend years of protection on the device.

## INDUSTRY - APPLICATIONS

- **Retail:**
  - Assisted sales
  - Inventory Management
  - Markdowns / Markups
  - Shelf Replenishment
  - Online Order Fulfillment
  - BOPIS / BORIS
  - Access control / Ticketing
  - Hospitality: Order taking
- **Warehouse & Manufacturing:**
  - Inbound / Outbound Logistics
  - Sort, Pick, and Pack
  - Shipping / Receiving
  - Production & Quality Control
  - Inventory Management
  - Track & Trace
  - Intralogistics
- **T&L:**
  - Field Service / Maintenance
  - Deliveries / DSD
  - Route accounting / Order processing
  - Proof of Delivery / Damage
  - Workforce management

# MEMOR 11 FAMILY OF MOBILE COMPUTERS

## TECHNICAL SPECIFICATIONS

### WIRELESS COMMUNICATIONS

<b>Local Area Network (WLAN)</b>	IEEE 802.11 a/b/g/n/ac and 802.11 d/h/i/k/r/v/w; Wi-Fi alliance Certification; WPA3 (Personal and Enterprise)
<b>Personal Area Network (WPAN)</b>	Class 2, Bluetooth® V5.0, Low Energy (BLE) Support
<b>NFC Communication</b>	Support for the following standards: ISO14443-4 (type-A, type-B); ISO15693; Mifare; Felica
<b>*WWAN Cellular</b>	LTE-Advanced / 4G+; Cat 6 <b>• EMEA and ROW Configuration:</b> GSM: Quad band; WCDMA: B1/5/8; FDD_LTE: B1/3/5/7/8/20/28; TDD_LTE: B38/39/40/41 <b>• North America Configuration (PTCRB certified):</b> GSM: Quad band; WCDMA: B1/2/4/5/8; FDD_LTE: B2/4/5/7/12/13/17/25/26/28
<b>Global Positioning System (GPS)</b>	Integrated Assisted-GPS (A-GPS) Supported Types: GPS, GLONASS, BeiDou

### DECODING CAPABILITY

<b>1D / Linear Codes</b>	Auto discriminates all standard 1D codes including GS1 DataBar™ linear codes.
<b>Digital Watermark Codes</b>	Digimarc® Barcode
<b>2D Codes</b>	Aztec Code, Data Matrix, HanXin Code, MaxiCode, MicroQR Code, QR Code, Dotcode
<b>Postal Codes</b>	Australian Post, Japan Post, KIX Code, PLANET, POSTNET, Royal Mail Code (RM4SCC), USPS Intelligent Mail
<b>Stacked Codes</b>	Micro-PDF417, PDF417, GS1 Composite, GS1 DataBar Expanded Stacked, GS1 DataBar Stacked, GS1 DataBar Stacked Omnidirectional, OCR (ID Cards, Passport)

### ELECTRICAL

<b>Battery</b>	Replaceable battery pack with rechargeable Li-Ion batteries; 3.8 V; 4,100 mAh (15.6 Watt-hours)
<b>Wireless Charging</b>	10 Watt fast charging

### ENVIRONMENTAL

<b>Drop Resistance</b>	Withstands drops from 1.5 m / 5.0 ft onto concrete (with rubber boot); Withstands drops from 1.2 m / 4.0 ft onto concrete (without rubber boot). Tested onto steel/concrete according to IEC 60068-2-32 Method 2 and MIL STD 810H Transit drop test.
<b>Tumbles</b>	Withstands 1,000 hits from 0.5 m / 1.6 ft and 250 hits from 1.0 m / 3.2 ft per IEC 60068-2-32 with rubber boot; Withstands 600 hits from 0.5 m / 1.6 ft per IEC 60068-2-32 without rubber boot
<b>Particulate and Water Sealing</b>	IP65
<b>Chemical Resistance</b>	Chemical cleanser and industrial oil resistant
<b>Healthcare Cleanable</b>	Isopropyl Alcohol, Hydrogen Peroxide, Clorox® Bleach; applicable for both the device and docks
<b>Temperature</b>	Operating: -20 to 50 °C / -4 to 122 °F Storage/Transport: -30 to 70 °C / -22 to 158 °F

### INTERFACES

<b>Interfaces</b>	USB-C: High Speed USB 2.0 Host and Client
-------------------	---

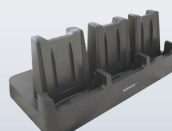
### SENSORS

<b>Vibration</b>	Software programmable for duration and intensity
<b>Magnetometer</b>	Senses orientation (eCompass)
<b>Accelerometer</b>	3-Axis accelerometer to detect orientation
<b>*Gyroscope</b>	Senses angular velocity *(Wi-Fi/Cellular model only)
<b>Ambient Light</b>	Auto adjusts display backlight
<b>Proximity</b>	Auto deactivates display when close to face

## ACCESSORIES



94A150095 Single Slot Charging Dock



94A150096 3-Slot Charging Dock



94ACC0192 4-slot Battery Charging Dock



Ethernet Adaptors (Single: 94ACC0297 / Triple: 94ACC0288)



94A150097 Vehicle Charging Dock



94ACC0201 Scan Trigger Handle



94ACC0193 Protective Boot



DLR-SLED01-EU RFID Reader Sled

### PHYSICAL CHARACTERISTICS

<b>Dimensions</b>	15.5 x 7.8 x 1.87 cm / 6.1 x 3.07 x 0.73 in
<b>Display</b>	5 inch IPS HD resolution 720 x 1280; LED backlight; Touch Screen: 5 points multi-touch capacitive panel with Dragontrail hardened glass
<b>Keys</b>	Physical Keys: 2 side scan keys; Power On/Off; Volume Up/Down; 3 user programmable Android™ keys
<b>Weight</b>	With Battery: 285.0 g / 10.0 oz

### READING PERFORMANCE

<b>Camera</b>	Resolution: 13 megapixel; Illumination: User controllable LED flash; Lens: Auto focus
<b>Scan Engine</b>	2D Ultra slim area imager (supports 1D / 2D codes); Datalogic's 'Green Spot' for good-read feedback; Halogen™ DE2102-HP; Depth of Field: 4 to 90 cm / 1.6 to 35 in, depending on bar code density and type; Resolution: Megapixel (1280 x 800 pixels); Illumination: White and Red LEDs (for Digimarc); Aiming: 650nm VLD; Field of View: 42°H x 26°V
<b>Print Contrast (Minimum)</b>	25%
<b>Minimum Element Width</b>	Halogen™ DE2102-HP: 1D Linear: 0.0635 mm / 2.5 mils; PDF: 0.0762 mm / 3 mils; Data Matrix: 0.152 mm / 6 mils

### SAFETY & REGULATORY

<b>Agency Approvals</b>	The product meets necessary safety and regulatory approvals for its intended use.
<b>Environmental Compliance</b>	Complies to EU RoHS

### SOFTWARE

<b>Applications</b>	Datalogic's SoftSpot technology for configurable soft triggers; Supports Datalogic's Queue Busting app; Enterprise class PTT available from Zello
<b>Provisioning</b>	Android Zero-Touch, QR Code enrollment, NFC Bump provisioning
<b>Configuration and Maintenance</b>	Scan2Deploy Studio, OEMConfig
<b>Software Maintenance</b>	Datalogic Shield: recurring security patches, firmware updates, and OS upgrades.
<b>Development</b>	Java, Cordova and Xamarin SDK available
<b>MDM Compatibility</b>	SOTI MobiControl, VMWare AirWatch, Ivanti Avalanche, 42Gears SureMDM, Microsoft Intune
<b>Terminal Emulation Compatibility</b>	StayLinked SmartTE, Ivanti Velocity

### SYSTEM

<b>Expansion Slots</b>	Micro-SD card slot: Compatible with Micro SD-HC cards; Data transfer up to 48 Mbps; User-accessible
<b>SIM Slot</b>	MicroSIM Standard size
<b>Memory</b>	System RAM: 4 GB; eMMC Flash: 32 GB
<b>Microprocessor</b>	2 GHz Octa-core
<b>Operating System</b>	Android v11 with GMS / AER (Upgradeable to Android 14)
<b>Real-Time Clock</b>	Time and date stamping under software control

### WARRANTY

<b>Warranty</b>	1-Year Factory Warranty
-----------------	-------------------------